



711 sqm



2,000 sqm



6



7



2019



3

4,400,000 EUR

Luxury / New Build / Villa / Waterfront

For Sale

Modern new build luxury villa with straight lines and pillar-less cantilevered porches to prevent the view from being obscured.

This high quality villa is situated in a unique location, first line in Moraira El Portet, featuring sea and panoramic views over the El Portet Beach, the Cap d'Or and the Peñón de Ifach.

The ground floor of this luxury property features a spacious luminous living-dining area with direct access to the beautiful pool terrace with infinity pool, a modern open plan fully equipped kitchen, three spacious double bedrooms with en suite bathroom and dressing room (one of them featuring direct access to the pool terrace), a guest toilet and a spacious garage suited for up to three cars.

A central interior patio serves as distributor to give access, by means of a interior staircase, to the upper floor suite with terrace as well as the lower floor "Loft" apartment, featuring two spacious double bedroom-suites, kitchen and living-dining room.

Only state of the art materials and technology have been used. This luxury villa includes a first line guest apartment, featuring two bedrooms, a luminous living-dining area and a solarium. The Mediterranean style gardening with automatic irrigation system surround the whole property complex.

Architecture by Joaquín Lloret.

Amenities and Special Features

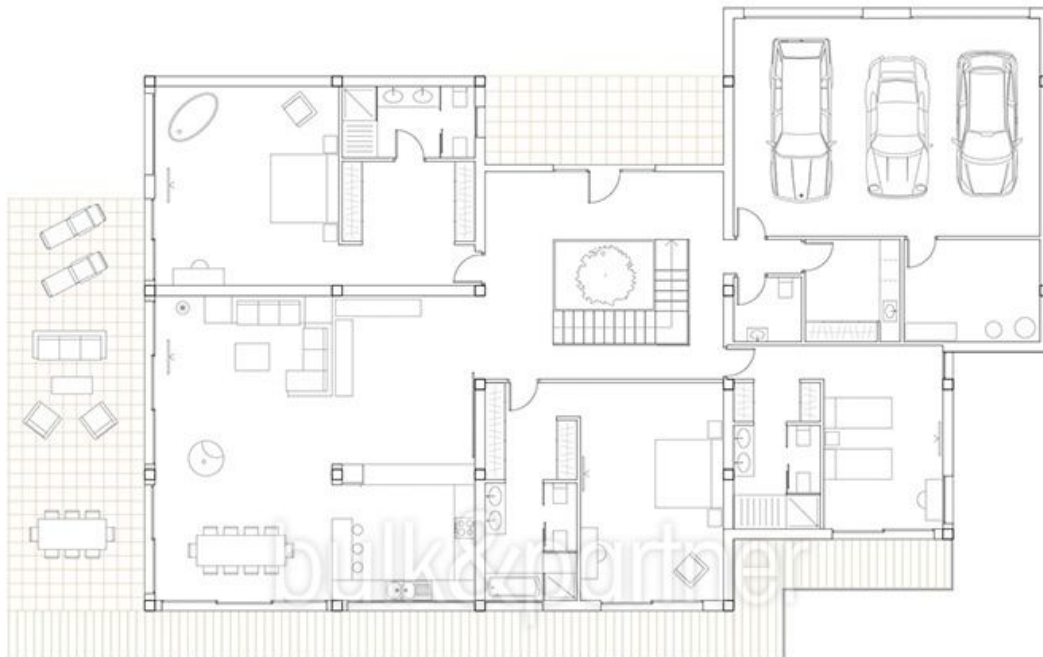
- ✓ Air Conditioning
- ✓ Alarm System
- ✓ Basement
- ✓ BBQ/Summer Kitchen
- ✓ Blinds
- ✓ Covered Terrace
- ✓ elec. Gate
- ✓ Fire Place
- ✓ Fitness Room
- ✓ Garden
- ✓ Guest Apartment
- ✓ Heatpump
- ✓ Infinity Pool
- ✓ Irrigation System
- ✓ Jacuzzi®
- ✓ Laundry Room
- ✓ SAT/TV
- ✓ Sauna
- ✓ Solar System
- ✓ Soundsystem
- ✓ Underfloor Heating





Floor Plans

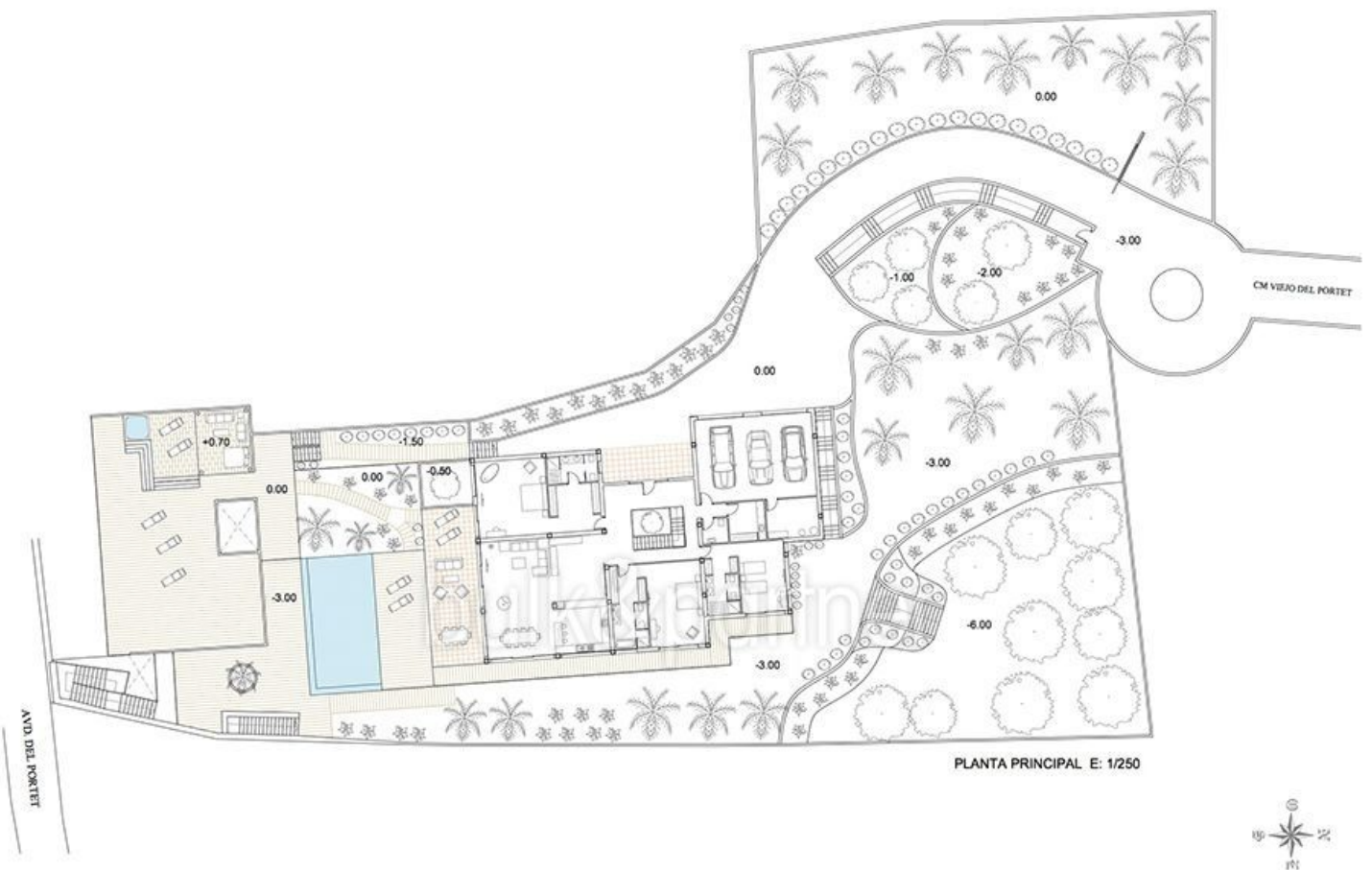
Ground Floor



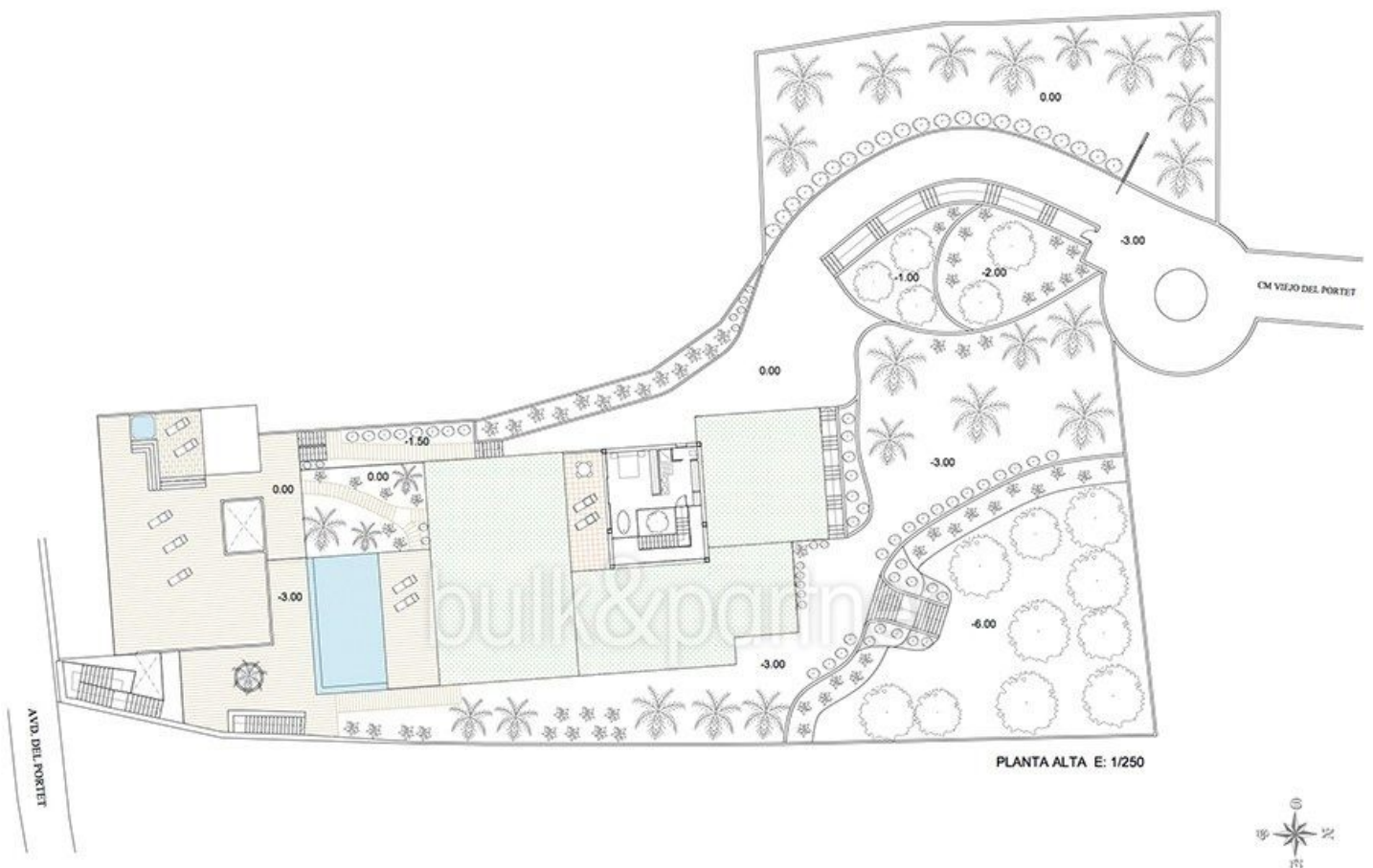
PLANTA PRINCIPAL E: 1/100



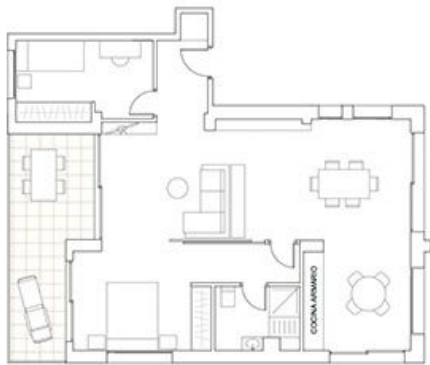
Ground Floor and Garden



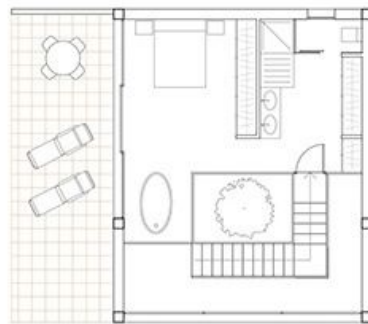
Upper Floor and Garden



Apartment and Upper Floor



PLANTA APARTAMENTO E: 1/100

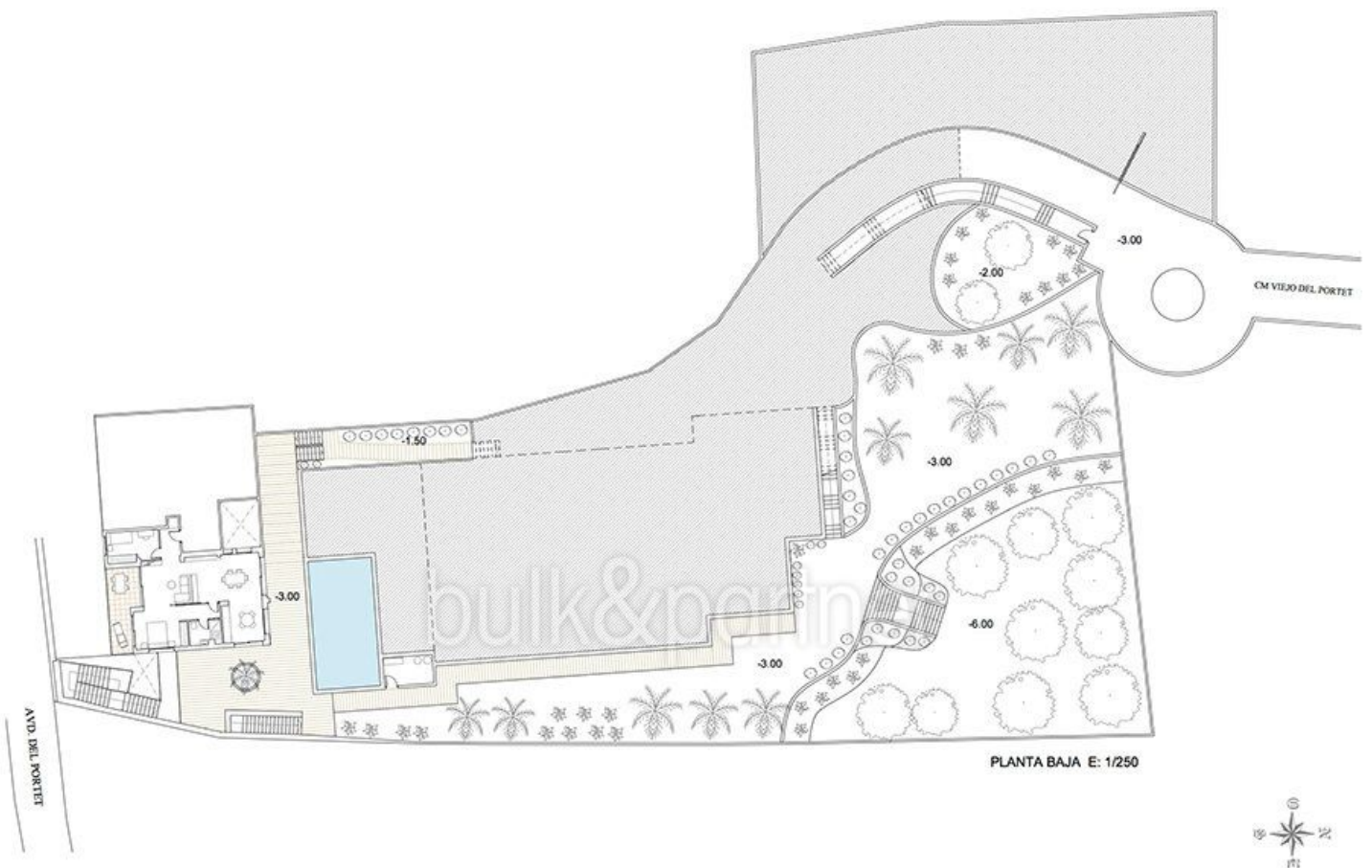


PLANTA ALTA E: 1/100

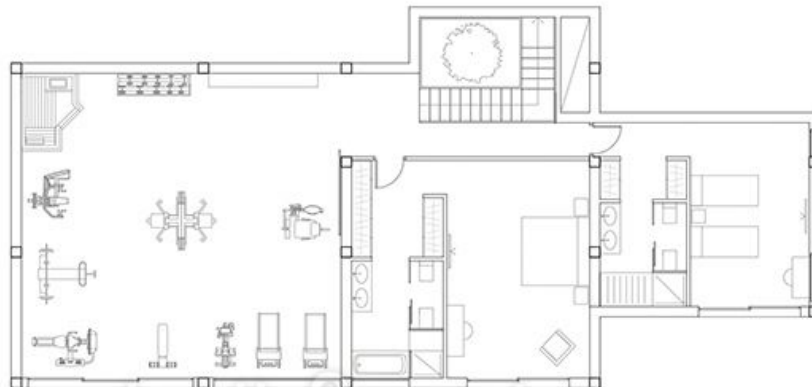
bulk&partner



Basement



Basement (alternative)



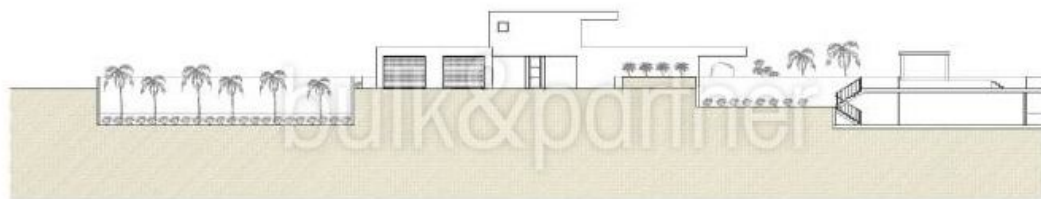
PLANTA BAJA E: 1/100



Lateral Facade



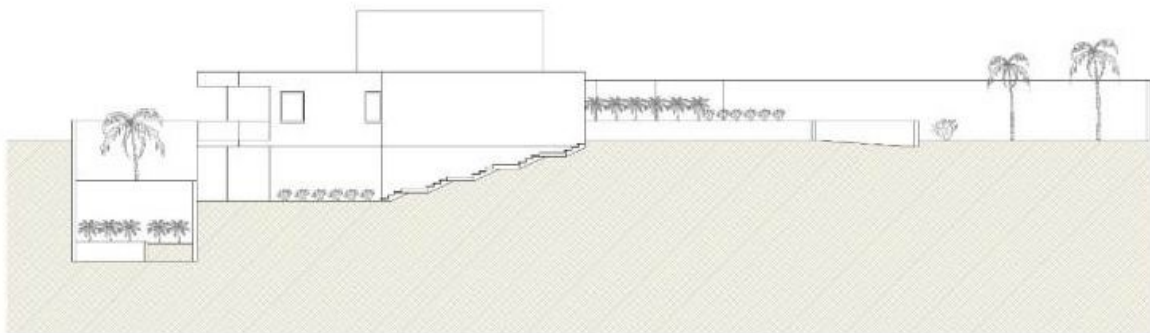
ALZADO ESTE



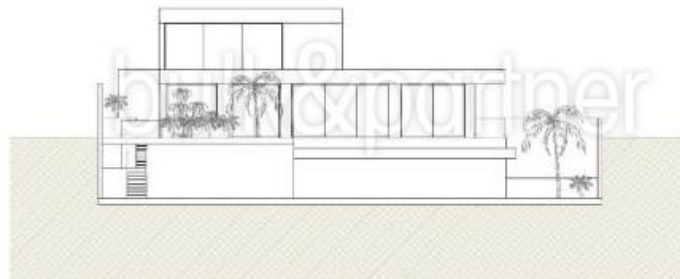
ALZADO OESTE

ESCALA: 1/250

Lateral Facade



ALZADO NORTE



ALZADO SUR

ESCALA: 1/150

Commission Details

Availability upon agreement. This material is based upon information, which we consider reliable, but because third parties have supplied it, we cannot represent that it is accurate or complete, and it should not be relied upon as such. This offering is subject to errors, omissions, and change of price or withdrawal without notice. Taxes, notary and register fees must be paid by purchaser, the commission by the seller as stipulated by Spanish regulations.